

PEIRA MOUSE RESTRAINER



Accurate, safe, ergonomic mouse restrainer.

The **Peira Mouse Restrainer** is designed to provide an accurate, safe, and efficient method for administering injections to mice. Its key features include;

1. Top Opening for Dorsal Access:

The dorsal skin of the mouse is easily accessed through the top opening, allowing for quick and precise subcutaneous injections. This design minimizes the risk of being bitten and reduces the likelihood of the user accidentally sticking their own finger.

2. Secure Restraint:

The restrainer effectively immobilizes the mouse, preventing kicking and movement during procedures. This ensures the safety of both the animal and the user.

3. Hygiene and Safety:

The design also prevents personal contact with feces or urine, maintaining a clean and safe working environment.

Available in 2 configurations:

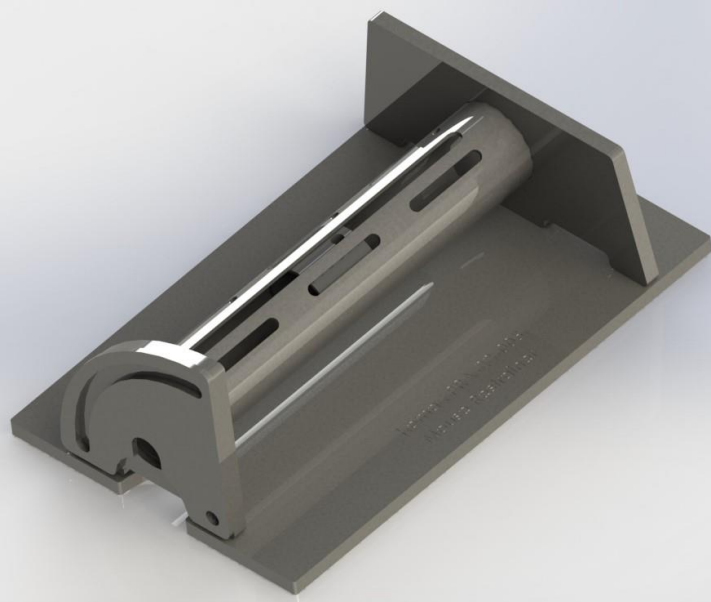
- Peira cylindrical mouse restrainer
- Peira tilted mouse restrainer

Features

The Peira Mouse Restrainer is entirely constructed from stainless steel, ensuring durability and ease of cleaning. It can be customized to meet specific experimental needs, allowing for adjustments in size and design. Additionally, extra functions, such as integrated measurement systems or specialized access points, can be incorporated to enhance its utility for various laboratory procedures

Benefits

1. **Secure Handling:** It ensures safe and secure handling of mice, minimizing stress and injury.
2. **Dorsal Access:** The design allows easy access for procedures like injections or sampling.
3. **Adjustability:** It can be adjusted to fit different sizes of mice, providing versatility for various experimental needs.
4. **Durability:** Made from high-quality materials, it ensures long-term use in laboratory environments.



Peira cylindrical mouse restrainer

Peira tilted mouse restrainer